



Heyco®-Tite EMC-2 Brass Liquid Tight Cordgrips Straight-Thru, Metric Hubs

EMC Nickel-Plated Brass with Contact Sleeve

The Ultimate in Liquid Tight Strain Relief Protection

- **Innovative contact spring**, due to strong clamping, virtually guarantees a secure shielded tap connection.
- Contact spring can be precisely positioned due to its clearly defined limit stop, making installation simple.
- Clamping technique ensures the cable can be rotated, pushed and easily dismantled during mounting.
- Ideal for applications where Electromagnetic Compatibility (EMC) is needed.
- Excellent 360° shield contact with contact sleeve due to braided shield which runs into the gland.
- Combination of the sealing insert and the contact socket guarantees a constant contact quality with minimal transfer impedance.
- For use in clearance or threaded holes.
- EMC Locknuts available see page 3-40.
- DFARS Compliant

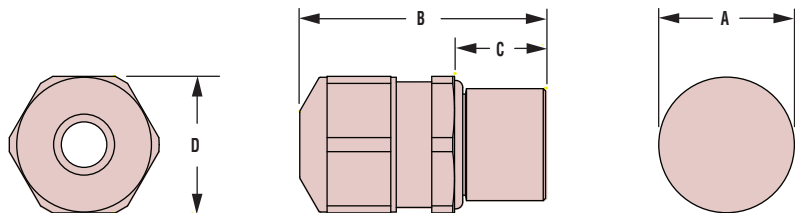
CABLE DIA. RANGE				PART NO.	THREAD SIZE	UL or IEC	PART DIMENSIONS							
Minimum		Maximum					A Clearance Hole Dia.		B Max. O.A. Length		C Thread Length		D Wrenching Nut Flat Size	
in.	mm.	in.	mm.			in.	mm.	in.	mm.	in.	mm.	in.	mm.	

Standard Thread

.138	3,5	.197	5,0	4594	M12 x 1,5	cULus	.472	12,0	1.26	32,0	.39	10,0	.59	15,0
.197	5,0	.256	6,5	4595										
.236	6,0	.413	10,5	4596	M16 x 1,5	cULus	.643	16,0	1.38	35,0	.39	10,0	.71	18,0
.315	8,0	.591	15,0	4597	M20 x 1,5	cULus	.747	20,0	1.46	37,0	.39	10,0	.94	24,0
.492	12,5	.807	20,5	4598	M25 x 1,5	cULus	.984	25,0	1.73	44,0	.43	11,0	1.18	30,0
.669	17,0	1.004	25,4	4599	M32 x 1,5	cULus	1.260	32,0	1.81	46,0	.51	13,0	1.42	36,0

Short Thread — ALL NEW PRODUCTS!

.138	3,5	.197	5,0	14594	M12 x 1,5	cULus	.472	12,0	1.06	27,0	.20	5,0	.59	15,0
.197	5,0	.256	6,5	14595										
.236	6,0	.413	10,5	14596	M16 x 1,5	cULus	.630	16,0	1.18	30,0	.20	5,0	.71	18,0
.315	8,0	.591	15,0	14597	M20 x 1,5	cULus	.787	20,0	1.30	33,0	.24	6,0	.94	24,0
.492	12,5	.807	20,5	14598	M25 x 1,5	cULus	.984	25,0	1.57	40,0	.28	7,0	1.18	30,0
.669	17,0	1.004	25,5	14599	M32 x 1,5	cULus	1.260	32,0	1.61	41,0	.31	8,0	1.42	36,0



Quick Specs

Material	Nickel-Plated Brass W/TPE Sealing Gland
Certifications	cULus Recognized under the Component Program of Underwriters' Laboratories File E51579 to both Canadian and U.S. requirements
Temperature Range	-40°F (-40°C) to 212°F (100°C)
IP Rating	IP 68, IP 69K